

UNION IRON 

WE
OFFER
SOLUTIONS



MODELS



I-5 INDUSTRIAL TRUCK PROBE

DESIGNED FOR FACILITIES WITH DAILY HIGH TRAFFIC

- Heavy duty model designed for facilities receiving 3 million bushels or more per year with daily traffic
- Main Mast: 10 inch square tube x $\frac{1}{2}$ " wall, with a height of 13 foot 3 inches
- Base Plate: $\frac{3}{4}$ " x 24" x 24"
- Outer Extension Arm: 4" square tube x $\frac{3}{16}$ " wall
- Inner Extension Arm: 3 $\frac{1}{2}$ " square tube x $\frac{1}{4}$ " wall
- Pivot Arm: 6" square tube by $\frac{1}{4}$ " wall
- Reach: 8' 6" - 12' 6" standard reach with custom lengths available
- Hydraulic Pump: Bosch brand direct drive, 5 Horse Power, 5 GPM, 1400 PSI, with a 15 Gallon Reservoir. Mounted in a fully enclosed stand alone vented cabinet

C-3 COMMERCIAL TRUCK PROBE

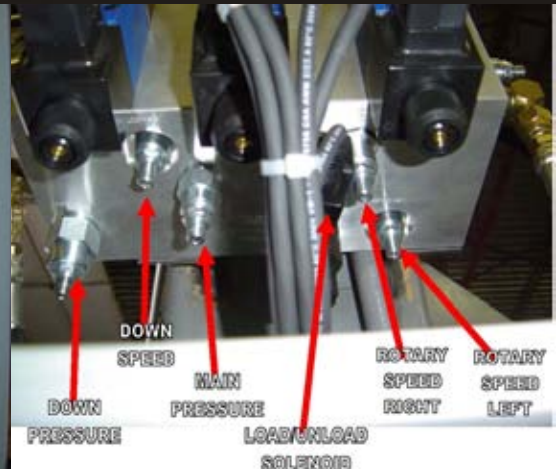
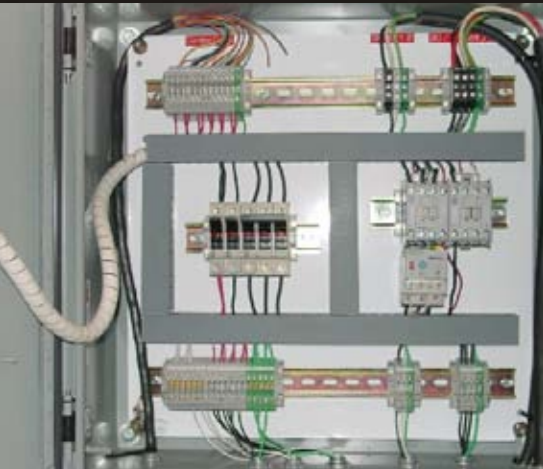
DESIGNED FOR FACILITIES WITH SEASONAL HIGH TRAFFIC

- Medium duty model designed for facilities receiving less than 3 million bushels per year with seasonal high traffic
- Main Mast: 8 inch square tube x $\frac{3}{8}$ " wall, with a height of 12 foot 3 inches
- Outer Extension Arm: 4" x 3" tube x $\frac{3}{16}$ " wall
- Inner Extension Arm: 3 $\frac{1}{2}$ " x 2 $\frac{1}{2}$ " x $\frac{3}{16}$ " wall
- Reach: 8' 6" - 12' 6" standard reach with custom lengths available
- Pivot Arm: 4" square tube by $\frac{1}{4}$ " wall
- Base Plate: $\frac{1}{2}$ " x 24" x 24"
- Hydraulic Pump: Bosch brand direct drive, 3 Horse Power, 5 GPM, 870 PSI with a 3 Gallon Reservoir. Mounted to the probe mast with a protective cover shield

SWIVELING KNUCKLE DESIGN

- Our knuckle design allows the stinger to move in any direction if the trucker tries to drive off or the operator hits a tarp bow or chain
- Eliminate costs of damaged probe stingers
- Convert your existing probe to a dual swiveling probe with a Union Iron retrofit kit

FEATURES



ELECTRICAL FEATURES

- All panels are UL compliant and pre-wired by a UL certified shop
- Each panel arrives with electrical diagrams and color coded control cable to make installation easy
- UL Certification is available upon request for required states and facilities
- Panels include fuse protection, motor starters, overload protection, and emergency disconnect.
- Standard panels: 208V, 230V/460V 3-phase, 230V single phase
- Push button hydraulic controls for easy field adjustment

CONTROL & PANELS

- Heavy Duty dual joystick controls rated to 1,000,000 cycles
- Light indicator switches
- 110 volt signal buzzer mounted to the mast
- Traffic lights 8" and 12" red/green standard lights. Custom light assemblies available with designated pits such as PIT 1/PIT 2, North Pit/South Pit, etc.

HYDRAULIC FEATURES & ADJUSTMENTS

- Heavy Duty dual joystick controls rated to 1,000,000 cycles
- Light indicator switches
- 110 volt signal buzzer mounted to the mast
- Traffic lights 8" and 12" red/green standard lights. Custom light assemblies available with designated pits such as PIT 1/PIT 2, North Pit/South Pit, etc.



PROBE SURVEILLANCE SYSTEMS

- Improve your sampling speed with our camera and monitor system
- Avoid bottlenecks at the scale by sampling prior to the scale house
- Makes it easy to avoid tarp bows and chains
- See up to 45' in complete darkness with our infrared Camera System

REMEMBER

Do not operate equipment with safety devices removed

PRE-WIRED, PRE-ASSEMBLED & PRE-TESTED

- All Union Iron probes are individually set up and tested. Hydraulics are set to a comfortable operating speed
- Minimal field assembly required
- Saves money on installation

REMOTE SAMPLING SYSTEMS

- Dual Vacuum Systems are available for long overhead or underground grain transfer systems for your customized truck probe needs

UNION IRON

3550 E. Mound Road Decatur, IL USA 62526
1.800.333.5148 sales@unioniron.com unioniron.com

AGI 
AG GROWTH INTERNATIONAL