

WE
OFFER
SOLUTIONS

WHY TEMPORARY STORAGE ?

IT MAKES ECONOMIC SENSE

Union Iron Temp Stor temporary grain storage systems are an inexpensive alternative to traditional permanent storage systems. Union Iron Temp Stor systems require limited capital investment: as low as \$.09 per bushel.

The system installs quickly, in a manner of days, not weeks or months. This lowers the risk associated with building grain storage. Quick installation permits elevators to make buying decisions at the last minute, after they have determined the need, not before.

The standard Union Iron Temp Stor aeration system provides an airflow rate of 1/10 CFM per bushel; higher airflow rates are available as needed. The higher airflow rates ensure grain quality is maintained so loss is minimized.

OUR TRACK RECORD

Union Iron, headquartered in Decatur, Illinois, USA, has been manufacturing quality products since 1852 - over 150 years. In 2001, Union Iron purchased Huss and Schlieper, Inc. (HSI), a leading manufacturer of bulk material handling equipment.

Union Iron manufactures and markets the most complete line of material handling equipment in the industry: bucket elevators, belt conveyors, drag conveyors, screw conveyors, distributors, trusses, towers, tunnels, probes, cleaners and accessories.

Union Iron has manufactured the Temp Stor temporary grain storage system since 2000. Hundreds of Temp Stor systems have been installed over the globe at country elevators, river and rail terminals and even large farms.



Temp Stor with center tower Located in Indiana, USA

FEATURES & BENEFITS

The Union Iron Temp Stor temporary grain storage system can be installed in any available space with minimal site preparation. Normally, a raised pad of 4" crushed limestone is sufficient.

The modular, preassembled construction allows for quick erection (days not weeks), quick disassembly and efficient storage. Because the walls are constructed in 10' sections, an unlimited number of configurations are possible. The units can also be quickly disassembled and reinstalled in different locations, as needed. After disassembly, the site can easily be returned to its original state.

The 3" x 3" x 1/4" galvanized structure and galvanized planking ensure a long product life, able to withstand multiple reinstallations.



HEAVY DUTY

Support legs are constructed of 3" x 3" x 1/4" galvanized angle iron.



MINIMAL SITE PREP

Modular design allows the system to be installed on slightly uneven surfaces in multiple configurations.



LOW FREIGHT COST

Complete 100' x 300' x 4' (325,000 bushels) ships on one truck.



EASY ASSEMBLY

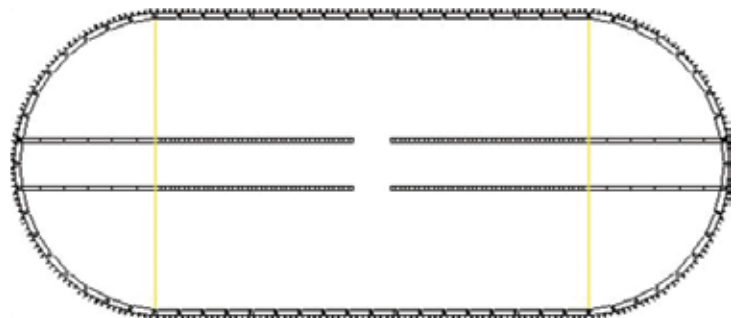
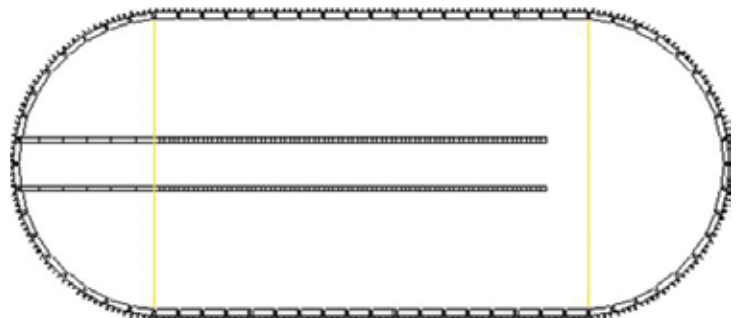
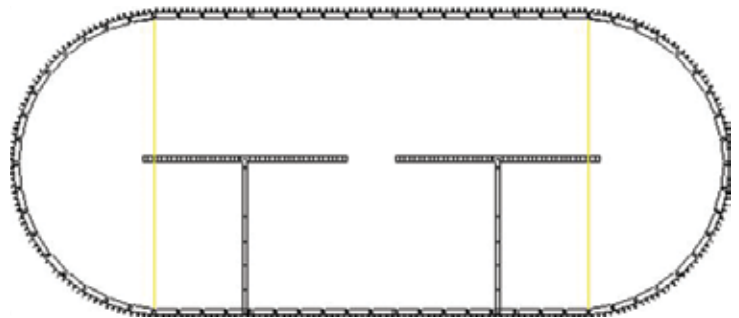
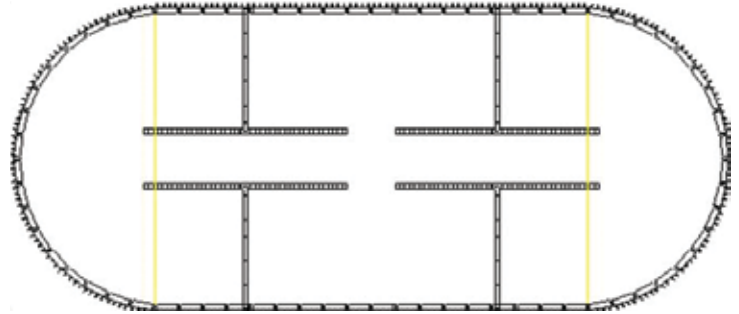
Complete 100' x 300' x 4' (325,000 bushels) can be setup in one day.

AERATION

Each Union Iron Temp Stor system is custom designed to preserve grain quality by maintaining proper airflow. Most Union Iron systems are designed with a minimum of 1/10 CFM per bushel. Keeping grain cool and dry controls organisms and reduces the risk of loss. The negative pressure aeration system allows grain condition to be monitored, as the air exiting the fans has already passed through the grain mass. The negative pressure system also assists in maintaining a tight tarp-to-pile seal.



STANDARD OVAL RECTANGULAR AERATION CONFIGURATIONS



Union Iron uses AIRLANCO galvanized vane axial and centrifugal aeration fans, which provide maximum airflow and long life. Vane axial fans use balanced cast aluminum blades. Centrifugal fans use a balanced, powder coated, seam welded steel centrifugal wheel.

Union Iron uses Timewell Tile MaxAir aeration ducts. MaxAir ducts are constructed of corrosion resistant, high density polyethylene plastic. It is longer lasting and more durable than metal pipe. The MaxAir sock material is 100% polypropylene material and is designed for multi-year use.

Standard Aeration Systems Designed for Corn
at 1/10 CFM per Bushel Airflow Rate.

Contact Union Iron for Custom Applications

ACCESSORIES



CENTER TOWERS

Union Iron Temp Stor round systems can be loaded using a center tower. As the pile is loaded, the grain discharges through doors in the center pipe.



TARPING HOISTING

Union Iron offers a tarp hoisting system for round piles. The tarp is lifted as the pile is filled. Lifting yokes are available to extend tarp life.



OPEN BELT CONVEYOR

Union Iron offers an open belt conveyor to fill Temp Stor units. Union Iron also offers a complete line of en-masse chain conveyors and bend section incline conveyors.



TRUSS & TOWERS

Union Iron offers a complete line of truss and towers to support conveying equipment. Truss to free-span up to 170' is available.

SPECIFICATIONS

Rectangular / Oval System						Round Systems				
System Width (Ft.)	System Length (Ft.)	Wall Height (Ft.)	Peak Height (Ft.)	System Capacity (Bu.)	System Capacity (Ft. ³)	System Width (Ft.)	Wall Height (Ft.)	Peak Height (Ft.)	System Capacity (Bu.)	System Capacity (Ft. ³)
60	100	4	16.73	40,594	50,742	100	4	25.22	69,584	86,980
60	100	6	18.73	50,194	62,742	100	6	27.22	82,150	102,688
60	100	9	21.73	64,594	80,742	100	9	30.22	101,000	126,249
100	300	4	25.22	308,237	385,297	200	4	46.45	456,138	570,173
100	300	6	27.22	356,237	445,297	200	6	48.45	506,404	633,005
100	300	9	30.22	428,237	535,297	200	9	51.45	581,802	727,252
120	300	4	29.47	408,597	510,746	300	4	67.67	1,426,369	1,782,691
120	300	6	31.47	466,197	582,746	300	6	69.67	1,539,466	1,924,333
120	300	9	34.47	552,597	690,746	300	9	72.67	1,709,112	2,136,390
120	1000	4	29.47	1,533,138	1,916,423					
120	1000	6	31.47	1,725,138	2,156,423					
120	1000	9	34.47	2,013,138	2,156,423					
200	800	4	46.45	2,889,059	3,611,324					
200	800	6	48.45	3,145,059	3,931,324					
200	800	9	51.45	3,529,059	4,411,324					



Sizes given for example only.
Contact Union Iron for custom sizes.

REMEMBER

Do not operate equipment with safety devices removed



UNION IRON 

3550 E. Mound Road Decatur, IL USA 62526
1.800.333.5148 sales@unioniron.com unioniron.com

AGI 
AG GROWTH INTERNATIONAL